

WHO, sanitation and health

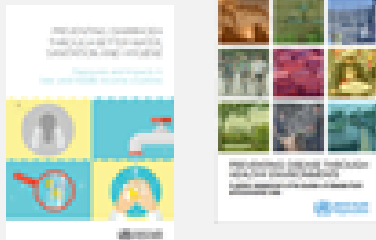


Rick Johnston, johnstonr@who.int

31 August 2017, SIWI World Water Week

WHO WASH – Areas of work

Disease burden estimates



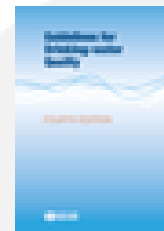
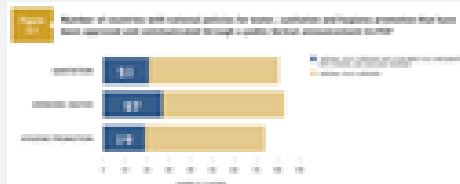
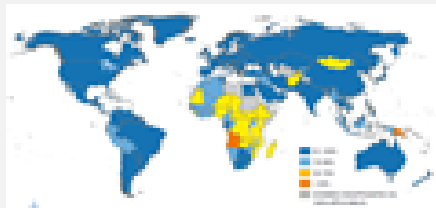
Strengthen WASH in health programmes



Partners

Norms, guidelines and technical support

Monitoring



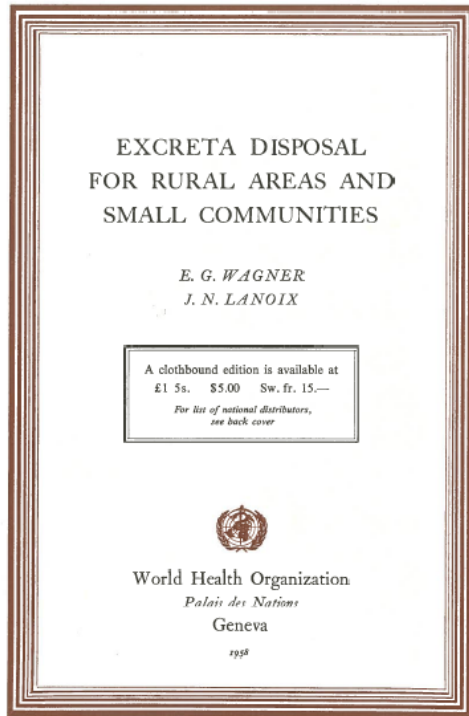
Norms, guidelines, technical support

1958

SPECIMEN COPY
NOT FOR SALE

2006

2015



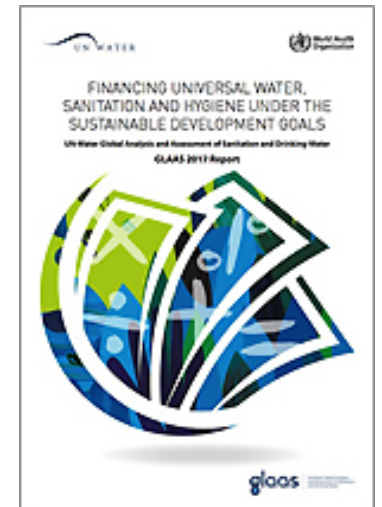
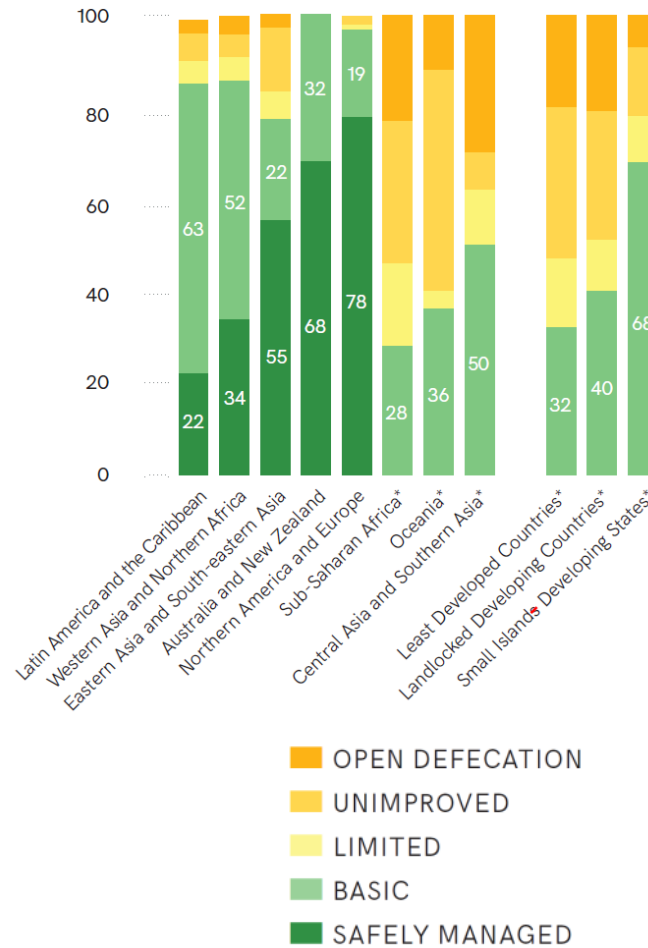
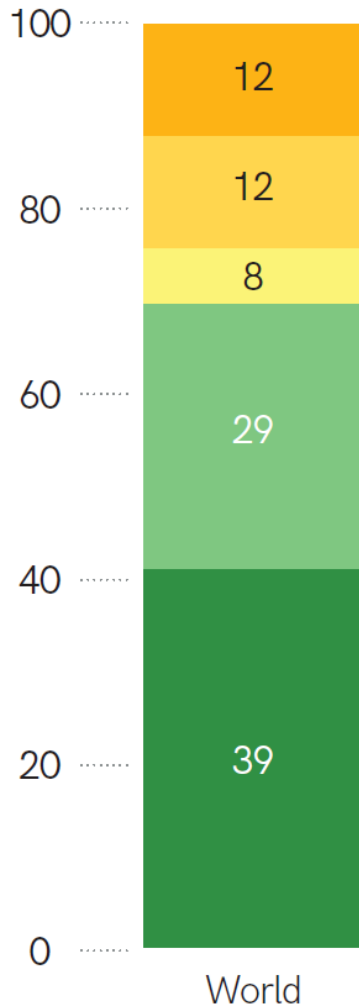
Guidelines for the safe use of wastewater, excreta and greywater



2018 Guidelines on Sanitation and Health

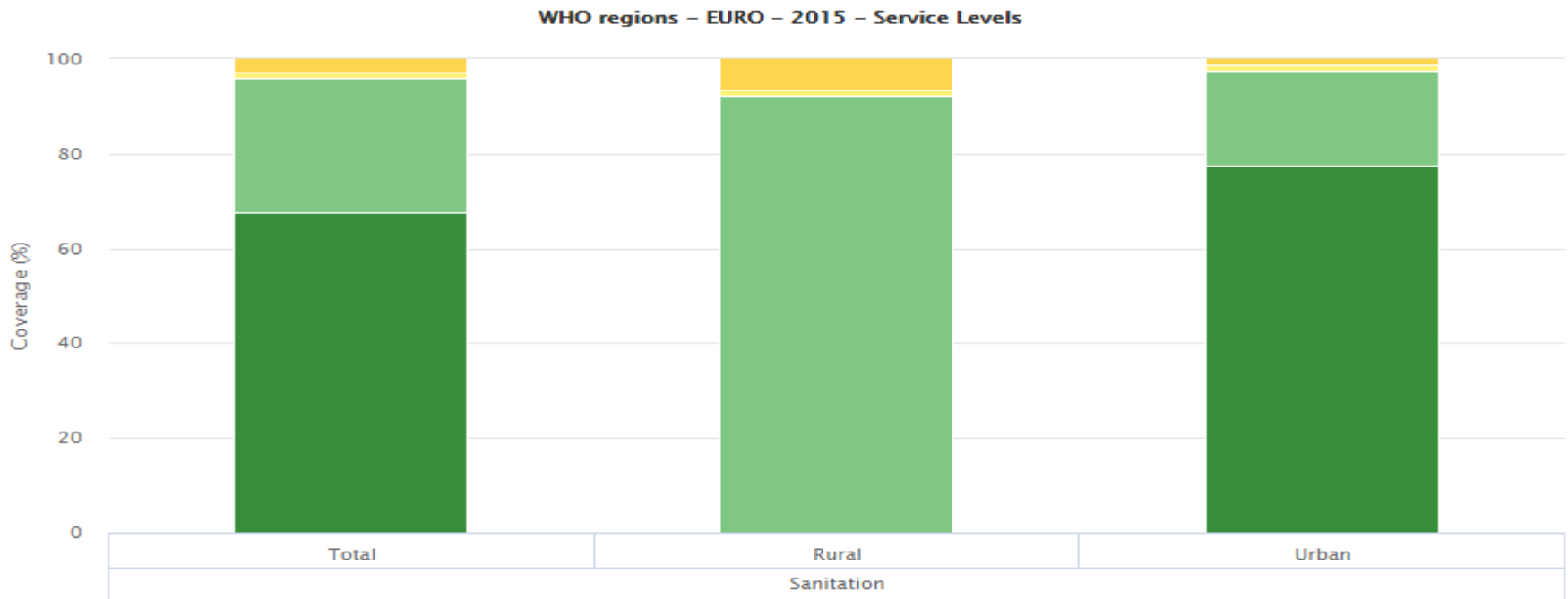
2017 Potable Reuse

Monitoring



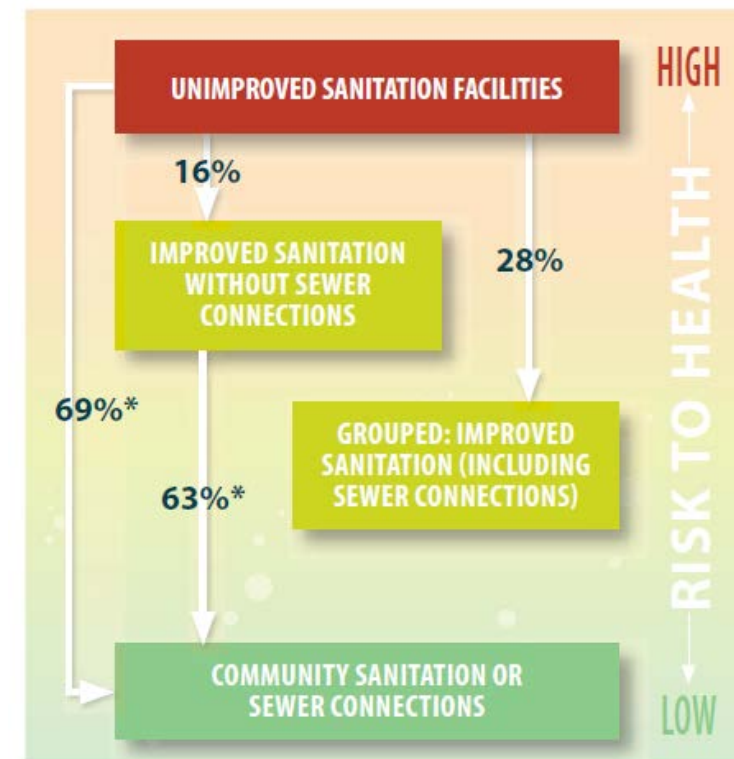
SDG baselines, EURO region

- Safely managed sanitation 67% (614 M) (estimates for 40/53)
- Basic sanitation 29% (260 M)
- Lacking basic sanitation 4% (36 M)



Burden of disease

- Inadequate sanitation
 - 280 thousand diarrhoeal deaths in 2012
 - One every two minutes
 - Other health outcomes
- Updating estimates in 2018



Strengthen WASH in health programmes



WASH in Health Care Facilities

**Water
Sanitation &
Hygiene**
for accelerating and
sustaining progress on
Neglected Tropical Diseases

Global strategy on WASH and NTDs



Global action plan on AMR

Thank you.



World Health
Organization

WHO

20, Avenue Appia
1211 Geneva

Switzerland